

CONCAVE 22

We're On The Run For 2001!
Same Old Convention! Great New Location!!

February 23-25, 2001

Guest Of Honor Janice Gelb

Come on the road with us as Kentucky's long-running science fiction relaxacon makes its first change in location in 19 years! Yes, due to Concave's increasing size and popularity, we are moving 10 miles up the road to the larger and more luxurious **Hampton Inn of Horse Cave**. Located right off I-65 at Exit 58, we hope the new facilities will make a great convention even better!

Some of the advantages of the new location include an indoor pool and hot tub, elevator, and full handicapped accessibility, plus 24-hour restaurants, shopping center, and an overflow hotel within walking distance of the Hampton Inn. The area offers its own unique attractions such as the **Kentucky Down Under Park** at Exit 58. In downtown Horse Cave there are the **American Cave Museum** and **Hidden River Cave**. Best of all is that the new hotel makes it possible to end the infamous room lottery!

MAKE YOUR RESERVATIONS DIRECTLY AT:

The Hampton Inn of Horse Cave

750 Flint Ridge Road - Horse Cave, KY 42749

(270) 786-5000 Tell them you're with Concave!

ROOM RATE: \$49.00 + tax: Single-Quad Occupancy

ALL RESERVATIONS MUST BE CONFIRMED

BEFORE FEBRUARY 9, 2001!

**Room rate includes a continental breakfast
for registered guests.**

**FOR REGISTRATION OR MORE
INFORMATION CONTACT:**

Concave c/o Gary Robe

P. O. Box 3221 Kingsport, TN 37664

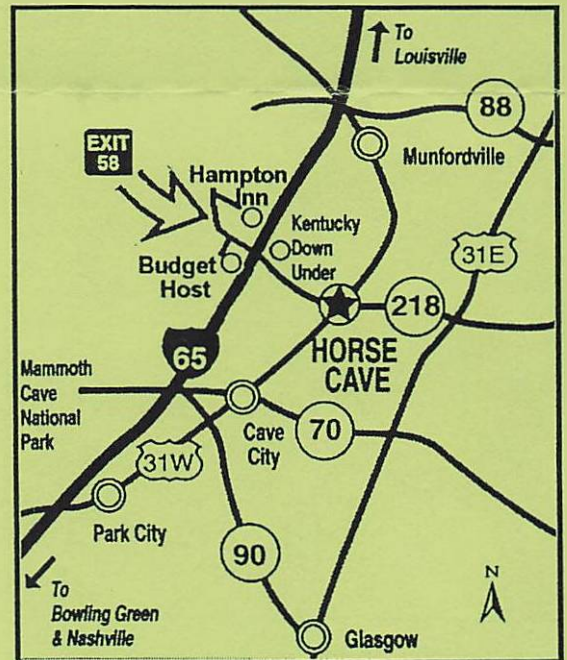
Phone: (423) 239-3106

E-mail: grrobe@preferred.com

MEMBERSHIP RATES:

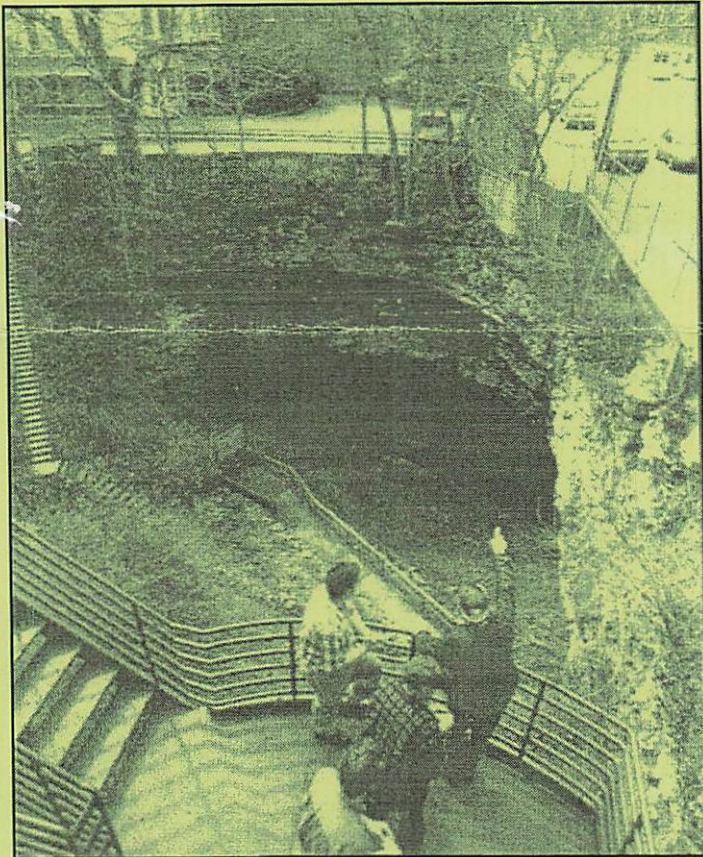
\$ 20.00 until 2/13/2001

\$30.00 at the door



A BIT ABOUT HORSE CAVE

Kentucky's cave area is full of surprises, and Horse Cave is no exception! This small town is perhaps the only place in the world where you could conceivably fall off Main Street into a cave opening. It's worth checking out!



OVERFLOW ACCOMODATIONS

The **Budget Host Inn** offers an economical and convenient alternative. Located within easy walking distance to the Hampton Inn, the Budget Host Inn offers comfortable rooms plus a full breakfast for all registered guests.

ROOM RATES:

Std. Double: \$33.00 + tax, Max. 4 people

King Suite: \$35.00 + tax, Maximum 4 people

Mini Suite: \$37.95 + tax, Maximum 6 people

Dlx. Suite: \$40 - 45.00 + tax, Max. 4 people

Some of the Mini and Deluxe suites include a full kitchen and cooking utensils. Prices shown are for double occupancy. Rates are higher for triple and quad occupancy.

BUDGET HOST INN MAMMOTH CAVE AREA

Phone: 1-800-888-CAVE for reservations

Concave is a weekend of relaxed socializing among science fiction fans of all ages featuring an around-the-clock fully stocked consuite, art show and auction, gaming rooms, and a huxter room. Our mission is to continue the fannish traditions of bringing together SF fans of diverse interests, introduce new generations to the family of SF Fandom, and to honor some of the people who have contributed greatly to this vibrant sub-culture. Concave is not the place to meet many SF writers and artists, but it is a place to meet others who share your enthusiasm for the fantastic.

Art Show Information

To receive a copy of the Concave Art Show Rules, bid sheets, control sheets and shipping information, please contact:

Pat Molloy

P. O. Box 9135 - Huntsville, AL 35812-0135

Phone: (256) 830-4471

**NOTICE! DO NOT MAIL ANY ARTWORK
TO THE KINGSPORT, TN ADDRESS!**

Pat Molloy will provide all shipping instructions.

Huxter Room Information

The Concave Huxter Room is sold out, but dealers needing information may contact:

Steve Francis 5503 Matterhorn Dr.

Louisville, KY 40216 (502) 448-6562

Gaming Program Information

The Concave Gaming Program is usually very informal. There are usually no gaming organization sanctioned tournaments, and no prizes are awarded. We will try to accommodate groups wanting to run a particular game or tournament, but space is limited. To make reservations please contact:

John Hans or Patty Teague

2143-A Rockcreek Dr.

Bowling Green, KY 42101 (270) 843-1607